

Garment Information

Women's Eddie Bauer Packable Wind Jacket

Wind was the inspiration for this compact layer. It packs down into its own logo'd pocket, making it easy to carry wherever you go.

Fabric

- 100% nylon

Features

- Hood with locking draw cords for adjustability
- Contrast reverse coil zipper
- Underarm vents
- Packable zippered chest pocket
- Front unzipped pockets
- Elastic cuffs and an open hem
- Contrast Eddie Bauer logo on right chest



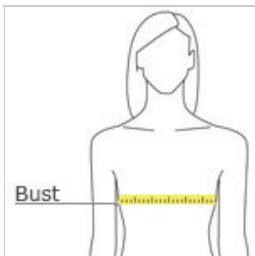
Care Instructions

Secure all garment before laundering. Machine wash warm delicate separately. Use mild detergent. Rinse thoroughly. Do not bleach. Tumble dry low or for best result. Line dry. Do not iron. Do not dry clean.

SIZE CHART

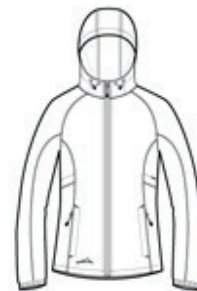
	XS	S	M	L	XL	2XL	3XL	4XL
Size	2	4/6	8/10	12/14	16/18	20/22	24/26	28/30
Bust	32-33	34-35	36-37	38-40	41-43	44-46	47-49	50-52

HOW TO MEASURE



BUST

Measure under the arm and around the fullest part of the bust with arms down, keeping tape horizontal.



front



back